

Institute of Physics – London & South East Branch – Retired Members Section

Ancient Lives, New Discoveries – British Museum Exhibition

Lunch at The Plough, Museum St
on Thursday 2 April 2015

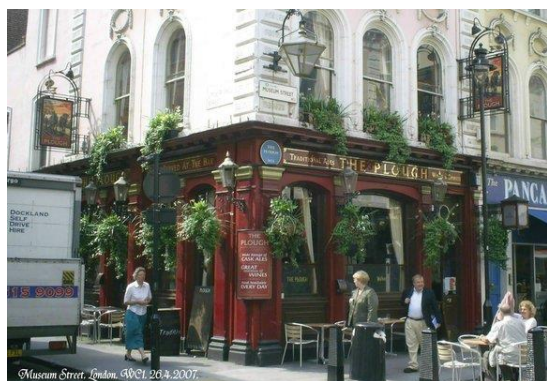
This visit has been organised by Tony Colclough.

Description: This exhibition at the British Museum has proved very popular with the public and has been extended to the 19 April. It focuses on eight mummies from the ancient world and on what has been learnt about them using modern scientific techniques. We shall enjoy a special introduction to key exhibits covering the mummies and the science from the curator, Dr Daniel Antoine. Twenty tickets have been reserved for REMS, but more can be sought if demand is high. Note the starting time is a little earlier than usual. We take lunch at The Plough very near the BM where a table or tables will be reserved for us in their first floor dining room. Members might like to return to the BM after lunch where there is much else to see, for example their long-standing galleries on ancient Egypt.



Where and when to meet: we gather at the Gallery Café on the ground floor of the British Museum from 10:30 for refreshments. The British Museum is in Great Russell St WC1B 3DG (see map).

Getting there: To the British Museum: Go to Tottenham Court Road Underground Station and emerge at EXIT 1. Cross the junction of the Tottenham Court Rd with Oxford St diagonally and walk a little way north up Tottenham Ct Rd. before turning right into Gt Russell St. Walk ahead crossing Bloomsbury St, until you come to the BM on your left. Enter and turn left immediately to walk straight ahead as far as you can until you come to the Gallery Café. **To The Plough:** This is a short walk away at 27 Museum St WC1A 1LH. Cross the road from the BM, turn right, then left at the Museum Tavern into Museum St. The Plough is a short distance along on your right at the junction with Little Russell St.



Timetable (approximate times)

10:30	Assemble at the BM's Gallery Café. Refreshments.
11:00	Start tour of Exhibition
13:00	Leave together for lunch at The Plough
15:00	Finish lunch and go home or return to the BM

Size of party: 20 max

Cost £10.00 Members pay for their food and travel.

Contacts Before the day: contact Tony Colclough at tonycolclough@tiscali.co.uk or on 020 8398 0766. On the day: call 07930 171 307.

Late arrivals Call Tony on 07930 171 307 who will advise you to catch up with the programme.

To the British Museum

